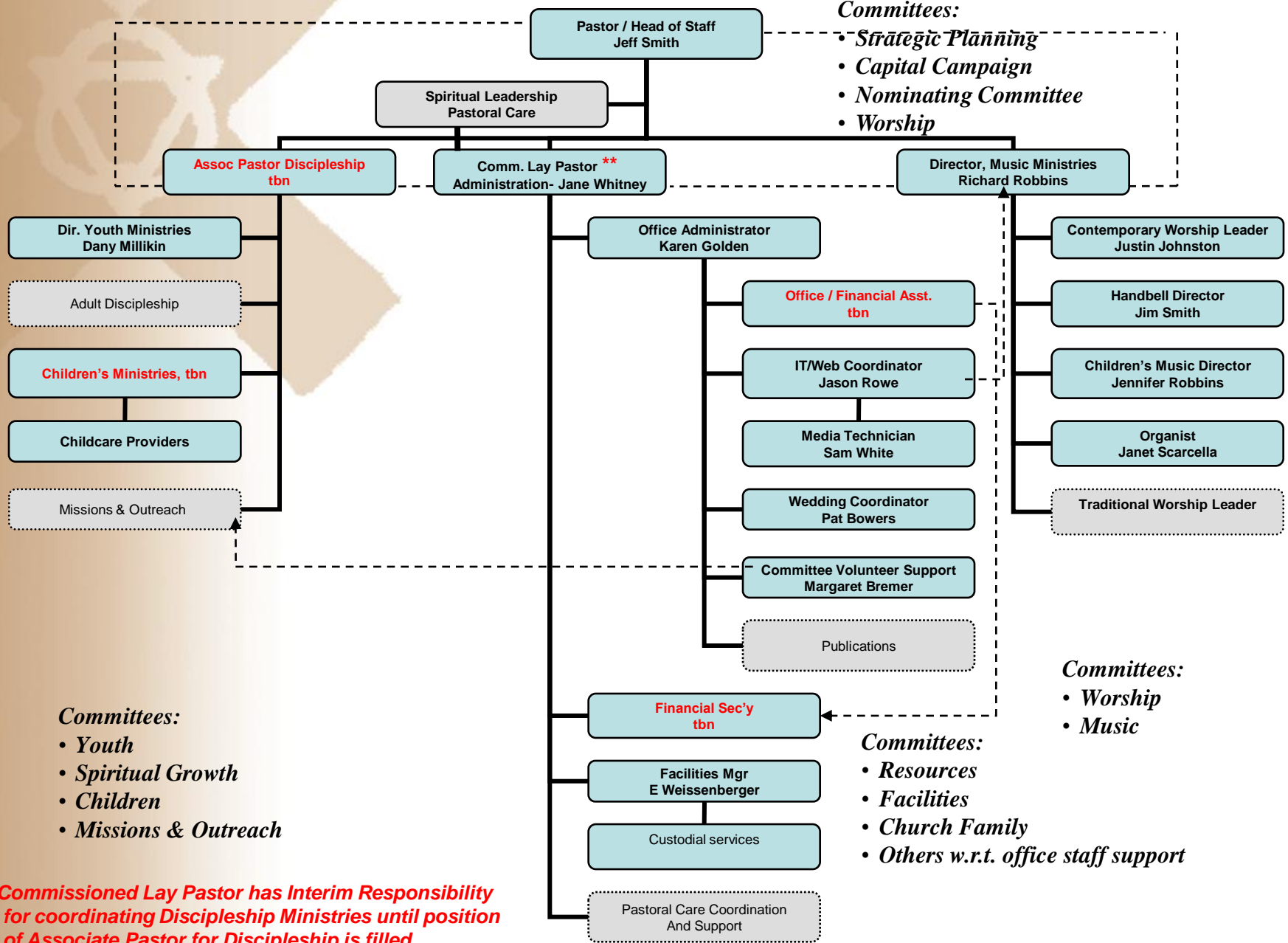


SAPCH Staff Organization Chart



- Committees:**
- *Strategic Planning*
 - *Capital Campaign*
 - *Nominating Committee*
 - *Worship*

- Committees:**
- *Worship*
 - *Music*

- Committees:**
- *Youth*
 - *Spiritual Growth*
 - *Children*
 - *Missions & Outreach*

- Committees:**
- *Resources*
 - *Facilities*
 - *Church Family*
 - *Others w.r.t. office staff support*

**** Commissioned Lay Pastor has Interim Responsibility for coordinating Discipleship Ministries until position of Associate Pastor for Discipleship is filled.**